



Большая библиотека технической документации
<http://splitoff.ru/tehn-doc.html>
каталоги, инструкции, сервисные мануалы, схемы.



GREE ELECTRIC APPLIANCES, INC. OF ZHUHAI

Add: West Jinji Rd, Qianshan, Zhuhai, Guangdong, China 519070
Tel: (+86-756) 852 2218 Fax: (+86-756) 866 9426
Email: gree@gree.com.cn Http://www.gree.com

HONG KONG GREE ELECTRIC APPLIANCES SALES LIMITED

Add: Unit 2612, 26/F., Miramar Tower 132 Nathan Road, TST, Kowloon, HK
Tel: (852) 3165 8898 Fax: (852) 3165 1029

Note:

Gree is committed to continuously improving its products to ensure the highest quality and reliability standards, and to meet local regulations and market requirements.

All features and specifications are subject to change without prior notice.

All images provided in this catalogue are used for illustration purposes only.
Copyright© Gree Electric Appliances, Inc. of Zhuhai. All rights reserved.

GC-1509-01



Distributor information

GREE
AIR CONDITIONER



COMMERCIAL
AIR CONDITIONER



LIGHT COMMERCIAL AC

U-Match

The U-Match series is a kind of split type air conditioner that the outdoor unit can be connected to different types of indoor units, which can meet various indoor decoration requirements for residential and light commercial locations. The product series are as below:

- **U-Match Super Inverter Series:** The Inverter type U-Match is with high efficiency design and environmental friendly refrigerant (R410A).
- **U-Match Fixed Frequency Series:** The Fixed Frequency type U-Match with economic cost, satisfies different outdoor conditions and power supply requirements(R410A/R22).

Outdoor Units (R410A/R22, 50/60Hz)



R410A/R22, 50/60Hz
9,000~60,000BTU/h

Indoor Units (R410A/R22, 50/60Hz)



Floor Ceiling
9,000~60,000BTU/h

Cassette
12,000~60,000BTU/h

Duct Type
9,000~60,000BTU/h

Top Discharge Condensing Unit & Indoor Units

This is a kind of split type air conditioner with top discharge type outdoor unit which can be connected to different types of indoor units, which to meet various indoor decoration requirements for residential house. The product series are as below:

- **Inverter Series:** Adopt with Inverter compressor and Micro Channel Heat Exchanger provides high efficiency (18SEER) and comfort.
- **Fixed Frequency Series:** Comes with lower cost and reliable operating, the efficiency is 13SEER/10SEER (R410A).

Outdoor Unit



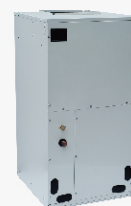
R410A,
18SEER, Inverter
24,000~48,000BTU/h

R410A,
13/10SEER Fix Frequency
18,000~60,000BTU/h

Indoors Units



Floor Ceiling
10SEER



Air Handler
10/13/18SEER

Duct Type Split Unit

This is a kind of duct type split air conditioner with higher capacity for commercial locations.

Outdoor Unit



Indoor Unit



R410A, 50Hz: 20~40kW (5.7~11.4RT)
R22, 50Hz/60Hz: 20~60kW (5.7~17.1RT)

Rooftop Packaged Unit

It's a kind of air-cooled packaged air conditioner which can be easily installed and maintained. There are two series of products as below:

- **14 SEER Series:** Small capacity and high efficiency Micro Channel Heat Exchanger, as well as R410A refrigerant.
- **Normal Efficiency Series:** Wider range from 3RT to 30RT and R22 as refrigerant standard, capable of operating under tropical condition.

14 SEER Series



R410A, 50Hz: 10.5~17.5kW (3~5RT)

Normal Efficiency Series



R22, 50Hz: 10.5~105kW (3~30RT)
R22, 60Hz: 14~87.5kW (4~25RT)

Water-cooled Packaged Unit

With water-cooled shell and tube condenser, the water cooled packaged air conditioning unit is favored for its compact packaged design and high energy efficiency, of which reliability, transportability is highly approved. The capacity range is from 16kW to 196kW that can be widely installed in the commercial buildings.



R410A, 60Hz
16~66kW(5-20RT)



R22, 50Hz
32~196kW (9~56RT)

The GMV Series is the VRF system that adopts variable capacity compressor and multiple indoor units to realize independent cooling or heating in different rooms. The product series are as below:

- **GMV5 Mini:** Side air discharge type Inverter VRF for residential houses.(4~6HP)
- **GMV 5:** The latest DC Inverter Multi VRF System with its high-efficient inverter compressor for large buidlings.(8-22HP)
- **GMV5 HR:** The latest modular type Inverter VRF with excellent cooling and heating function. (8-16 HP)
- **GMV5 Slim:** A new compact size VRF with maximum of 12 HP. (8~12HP)
- **GMV5 Home:** The modular type Inverter VRF with simultaneous cooling and heating function. (4~10HP)
- **Photovoltaic Direct-driven Inverter Multi VRF:** The latest direct-driven Inverter VRF, combining photovoltaic power generation with power consumption of the air condition to achieve energy-saving and emission reduction.(8~12HP)

Outdoor Units (R410A, 50Hz/60Hz)



22.4/28kW(8~10HP)



33.5kW(12HP)



Photovoltaic Direct-driven Inverter Multi VRF



12~16kW(4~6HP)



22.4~28kW(8~10HP)

GMV5 Home



12~16kW(4~6HP)

GMV5 Mini



22.4kW~33.5kW(8~12HP)

GMV5 Slim



22.4~61.5kW(8~22HP)

GMV5



22.4~45kW(8~16HP)

GMV5 HR

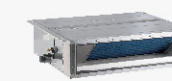
Indoor Units



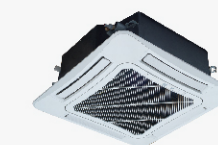
High ESP Duct
5.6~28kW



Low ESP Duct
2.2~14kW



Slim Duct
2.2~7.2kW



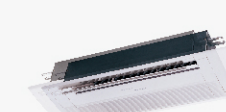
4-way Cassette
2.8~16kW



Compact 4-way Cassette
2.2~5.6kW



2-way Cassette
2.8~7.1kW



1-way Cassette
2.2~5.0kW



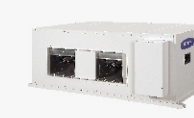
Wall Mounted
2.2~7.1kW



Floor Ceiling
2.8~14kW



Console
2.2~5.0kW



Fresh Air Processing
14~45kW



Floor Standing
10~14kW



Air Handler
7.1~14kW

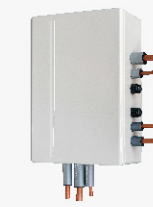
Hydro System (for GMV5 Home only)



Hydro Box
16kW



Water Tank
200~400L



Hot water converter



SXD200LCJW/C1-K

Note: The hot water converter is only match with the water tank model of SXD200LCJW/C1-K and vice versa.

FREE MATCH & SPECIAL AC

Free Match

It's a kind of DC Inverter multi-split air conditioner that consisted with one outdoor unit and up to five indoor units.

Outdoor Unit



R410A, 50/60Hz
14,000~42,000BTU/h

Indoor Unit



Wall Mounted
7,000~24,000BTU/h

Duct
9,000~24,000BTU/h

4-way Cassette
12,000 ~24,000BTU/h

Floor Ceiling
9,000~24,000BTU/h

Console
9,000~18,000BTU/h

Super Free Match

Capacity range from 12kW to 16kW can be widely used in residential house, hotel, business office and especially applicable in variable loading situation.

Outdoor Unit



R410A, 50/60Hz
42,000~56,000BTU/h

Indoor Unit



Wall Mounted
7,000~24,000BTU/h

Slim Duct
9,000~24,000BTU/h

4-way Cassette
12,000 ~24,000BTU/h

Floor Ceiling
9,000~24,000BTU/h

Console
9,000~18,000BTU/h

Close Control Air Conditioner

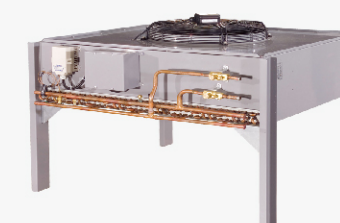
Air-cooled unitary air conditioner for precise air temperature and humidity control, which is widely used in computing equipment rooms, laboratories and precise processing industries, etc.

Indoor Unit



R22/R410A, 50Hz
5~40kW

Outdoor Unit



R22/R410A, 50Hz
5~40kW

Marine Air Conditioner

The marine air conditioner is specially designed for small vessels such as yachts and fishing boats.



R410A, 50Hz/60Hz
5,000~16,000BTU/h

CHILLER

Centrifugal Chiller



Photovoltaic Direct-driven Inverter Centrifugal Chiller
R134a,50/60Hz,1230~3516kW (350~1000RT)



CVE Series Permanent Magnet Synchronous Inverter Centrifugal Chiller
R134a,50/60Hz,880~5275kW (250~1500RT)



CC Series Magnetic Suspension Inverter Centrifugal Chiller
R134a,50/60Hz,457~1055kW (130~300RT)



C Series Fixed-speed Centrifugal Chiller
R134a,50/60Hz,1400~7200kW (398~2044RT)

Air-cooled Screw Chiller



Air-cooled Screw Chiller
R22,50Hz,
270~500kW(76~142RT)
R134a,60Hz,
230~430kW(65~122RT)
R134a, 60Hz
with Heat Recovery Function
230~430kW (65~122RT)



High-efficiency Modular Air-cooled Screw Chiller
R134a,50Hz,
320~1520kW(91~432RT)
*This photo is for reference only.

Water-cooled Screw Chiller



Water-cooled Screw Chiller
R22, 50Hz
175~1900kW (54~557RT)
R134a, 50Hz
180~1500kW (50~426RT)



High-efficiency Water-cooled Screw Chiller
R134a,50Hz,
265~1280kW(75~364RT)

Water-cooled Scroll Chiller



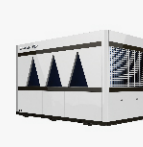
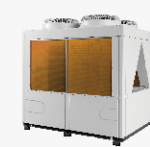
Water-cooled Scroll Chiller

R22, 50Hz,75~155kW (21~44RT)



R22, 50Hz,10~29.6kW (2.8~8.4RT)

Air-cooled Scroll Chiller



Air-cooled Scroll Chiller

R410a,50/60Hz,63~385kW(18.5~103RT)
R22,50Hz,65~160kW(18.5~45.5RT)

Mini Chiller



Inverter Mini Chiller
R410a,50Hz,8~14kW



Split Type
R410a,50Hz,7.5~14.2kW
R22,50Hz,8~15kW



Integral Type
R410a,50Hz,21.5~42kW
R22,50Hz,19~45kW

TERMINAL

Fan Coil Unit

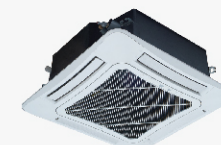
Various types of chilled water fan coil units can satisfy different requirements of indoor decoration and building requirements.

Concealed Ceiling Type



200~2000CFM

Cassette Type



471~1176CFM

Floor Ceiling Type



235~1200CFM

Wall Mounted Type



212~588CFM

Air Handling Unit

With high capacity and high air flow volume, the chilled water air handling unit can satisfy the air treatment from basic requirement to precise processing.

Horizontal Mounted Packaged Type



B Series
881~4696CFM



E Series
881~7049CFM

Vertical Packaged Type



1762~17623CFM

Modular Type

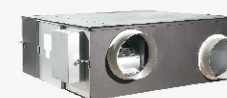


660~20360CFM

Ventilation

The ventilation equipments in HVAC projects such as Energy Recovery Ventilation, Air Curtain, Air Grille & Diffusers.

ERV



210~1760CFM

Air Curtain

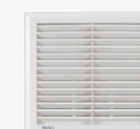


700~1350CFM

Air Grille & Diffusers



Adjustable Grille



Return Air Grille



Square Diffuser

AIR TO WATER

Multi-functional Heat Pump Water Heater

Versati II

Versati II is a multifunctional Air to Water Heating System with inverter compressor and R410A refrigerant, it can highly satisfy the requirement of residential sanitary hot water and air conditioning by connecting to water tank and chilled water fan coil units.

Outdoor Unit



R410A, 50Hz
6~10kW



R410A, 50Hz
12~16kW

Hydro Unit



R410A, 50Hz
6~16kW

Water Tank



200~300L

Versati II⁺(Monobloc Type)

It is a kind of DC inverter multifunctional air to water heat pump that could not only supply domestic hot water, but also realize cooling and heating for residential use.



R410A, 50Hz
8~10kW



R410A, 50Hz
12~14kW

Commercial Water Heater

The Air Source Water Heater can heat up the water by operating heat pump and absorbing the heat from the outdoor air, for sanitary hot water supplying.

Ultra Series



R410A, 50Hz
30/40kW(Direct Heating Type)
28/36kW(Circulating Type)



R410A, 50Hz
60kW(Direct Heating Type)
53kW(Circulating Type)

Modular Circulating Type



R22, 50Hz
18/36/65kW



Modular Direct Heating Circulating Type



R22, 50Hz
11/20/39kW

Residential Water Heater

Integral Type(R134a)



1.35kW
150~200L

2.4kW
270L

Split Type (R22)



Outdoor Unit
50Hz, 3.5/5/7.2kW



Water Tank
150~400L

Split Type(R134a)



Outdoor Unit
50Hz, 3.0kW



Water Tank
200L