



# AUX

## General Catalogue Commercial Air Conditioner 2014

Technology leads Intelligent life

AUX

Commercial Air Conditioner (AUX CAS) General Catalogue

Version: 2014/04

**AUX**  
Ningbo AUX Imp

NO.1166 North MingGuang Road(AUX-Tech  
Town,Ningbo Zhejiang,P.R.China  
TEL:86-574-88220364 FAX:86-574-88220364  
Http://www.cnaux.com E-mail:auxsale@cn.aux.com



Большая библиотека технической документации  
<http://splitoff.ru/tehn-doc.html>  
каталоги, инструкции, сервисные мануалы, схемы.





Established in 1986, as one of the top 500 Chinese enterprises, AUX Group is a diversified conglomerate, which covers 6 industries, including Intelligent Power Equipment, Home Appliance, Mobile Intelligent Terminal, Real Estate, Medical Service and Investment.

In 2012, With a total asset of 20 billion RMB, Aux has more than 20000 employees, the turnover of 40.5 billion RMB and the brand value of about 8 billion RMB. AUX owns 7 manufacturing bases, including Ningbo, Nanchang, Tianjin, Shanghai, Shenzhen, Dongguan and Cicheng, as well as a listed company with five high-tech enterprises, acting as a unit of National Enterprise Technology Center and permanent National Post-doctoral Workstation.

AUX has many brands and trademarks such as AUX, Sanxing, BFB, LN etc., among which Sanxing Electric, AUX Air-conditioning, Aux Plaza are nationally renowned brands.

Taking "Create an intelligent life, foster a prominent career environment" as its new mission and adhering to the WIN strategy of "A Steady Development Wins a Harmonious Future", AUX aspires to be a world famous enterprise In the new era. Aiming at a sales income of 80 billion RMB in 2015, AUX is striving to become one of the top 100 Chinese enterprises.



## Corporate values

Accuracy, Efficiency, Simplicity  
To Be Concentrated  
Target Oriented.



# 1. Industrial Plants

**Ningbo Base:** Founded in 2003, covers around 366,000m<sup>2</sup>, has an annual capacity of 5 million for Air-Con & 25 million units for Meter.

**ShangHai Base:** Total area of structure 310,000m<sup>2</sup>, combined with IT, R&D and investment.

**NanChang Base:** Production Commencement in 2004, Covers around 820,000m<sup>2</sup>, has annual capacity of 3 million units for Air-Con.

**Tianjin Base:** Covers around 980,000m<sup>2</sup> has a capacity of 1.5 million Air-Con & 5 million Electricity meter.



Tianjin Base (Air-Con/ Digital )



Shanghai Base (IT、R&D、Investment)



Ningbo Base (Air-Con、Power、Hospital)



Shenzhen Base (Telecom)



Chengdu Base (under construction )



Nanchang Base (Air-Con)



## 2. Production (CAC)



- ★ 1 base with Employees over 3,000.
- ★ 8 Assembling lines of LCAC, achieve 600,000 pcs, and VRF 20000 pcs of capacity yearly.

## 3. National Level Laboratory



- ★ 22 enthalpy difference testing laboratories
- ★ 7 environmental laboratory
- ★ 1 complex laboratory for 100HP testing
- ★ 1 complex laboratory for 20HP testing
- ★ 2 complex laboratory for 10HP testing
- ★ 1 thermal balance laboratory
- ★ 1 EMC testing laboratory
- ★ 1 compressor testing laboratory
- ★ 4 noise level testing laboratories
- ★ another 30 labs in on the way

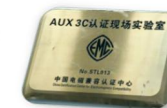
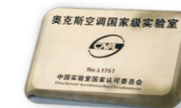
## 4. QC for New Product Development



- ★ 10~30pcs by random-drawn for evaluation
- ★ Another 10pcs for Long-life Testing in the meanwhile
- ★ 50~100pcs from small batch production for re-evaluation: Performance Test, Vibration Test, Falling Test, Noise Test, Simulative Transportation Test.
- ★ 500~1,000pcs batch production, select 10% of total units for testing
- ★ “QC PASSED” sticker only for products passed abovementioned testing
- ★ Complete BOM list and write into ERP system
- ★ Start Mass-production according to BOM list



## 5. Qualified Certification



Laboratory Certificate  
ISO/IEC 17025: 2005  
General Requirements for the Competence of  
Testing and Calibration Laboratories



## Light Commercial 50Hz R22

### Super Uno Outdoor Units



### Super Uno Indoor Units



### Commercial High ESP Duct



### Commercial Floor Standing



## Light Commercial 50Hz R410a

### Super Uno Outdoor Units



### Super Uno Indoor Units



## Light Commercial Latin America

### Super Uno Outdoor Units



12k Btu/h



18k Btu/h



24k Btu/h



30/36/42k Btu/h



48/60k Btu/h

50HZ



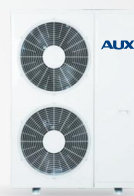
18k Btu/h



24k Btu/h



36k Btu/h



48/60k Btu/h

60HZ

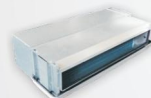
### Super Uno Indoor Units



Four-way Cassette  
12k -60k Btu/h



Ceiling & Floor  
18k-60k Btu/h



Low ESP Duct  
12k -24k Btu/h



Mid ESP Duct  
18k -60k Btu/h



High ESP Duct  
24k -60k Btu/h

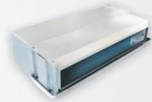
50HZ



Four-way Cassette  
18k-48k Btu/h



Mid ESP Duct  
18k-60k Btu/h



Low ESP Duct  
18k-24k Btu/h

60HZ

## Light Commercial Tropical

### Super Uno Outdoor Units



18k Btu/h



24k Btu/h



30k Btu/h



36k Btu/h



48/60k Btu/h

50HZ



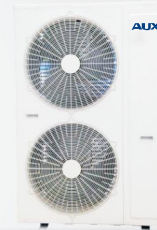
18k Btu/h



24k Btu/h



36k Btu/h



48/60k Btu/h

60HZ

### Super Uno Indoor Units



Mid ESP Duct  
18k-60k Btu/h



Low ESP Duct  
18k-24k Btu/h



Four-way Cassette  
18k-48k Btu/h

50HZ



Low ESP Duct  
18k-24k Btu/h



Mid ESP Duct  
36k-60k Btu/h

60HZ

# DC Inverter VRF(ARV 50Hz/60Hz)

## Outdoor Units-Mini VRF



8/10kW



12/14/16kW

## Outdoor Units-Modular VRF



25.2/28/33.5 kW



40/45/50.4kW

50HZ



22.4/28/33 kW



40/45kW

60HZ

## Indoor Units



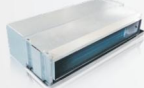
Four-way Cassette  
2.8-14.0kW



Ceiling & Floor  
4.5-14.0kW



Wall-mounted  
2.2-7.1kW



Low ESP Duct  
2.2-7.1kW



Mid ESP Duct  
4.5-15.0kW



High ESP Duct  
11.2-15.0kW

# Rooftop Package Units 50Hz/60Hz

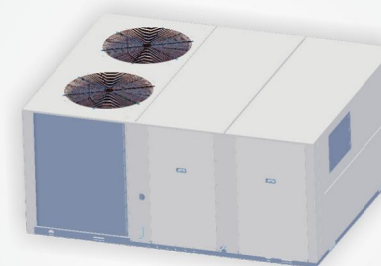
## Rooftop



5.0TR



7.5/10.0TR



12.5/15.0/20.0TR

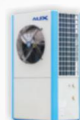


## Chiller

### Mini Chiller



13kW



16kW



28.5kW



### Modular Chiller



KingKong Type  
R22 65/130kW



X Type  
R22 65/95kW  
R410a 65kW



### Air-Cooled Screw Chiller



T1 R22:209kW-1968kW  
T1 R134a:250kW-2700kW  
**Hi-EER** T1 R134a:185kW-1680kW



T3 R22:178kW-1680kW  
T3 R134a:210kW-1980kW  
**Hi-EER** T3 R134a:185kW-1680kW



80TR-511TR  
**Hi-EER** 80TR-511TR



## Fan Coil Unit 50Hz/60Hz

### Fan Coil Unit



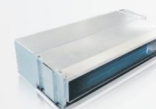
One-way Cassette  
200-500CFM



Four-way Cassette  
300-1400CFM



Ceiling & Floor  
400-1000CFM



Horizontal Concealed  
200-1400CFM



Floor-standing Exposed  
200-1400CFM



Wall-mounted  
200-800CFM

### Heat Recovery Ventilator



200-5000m<sup>3</sup>/h  
118-2941CFM





# Control System&Selection Software

## Remote Controller



YK-K    YK-H    YK-F    YK-D    YK-C    YK-P    YK-Q

## Wired Controller



XK-01    XK-02    XK-02A    XK-05    XK-05A

## Central Controller



Centralized Controller(Weekly Timer)



Centralized Control Adapter/  
Centralized Control Software Adapter

## Chiller Controller



XK-03

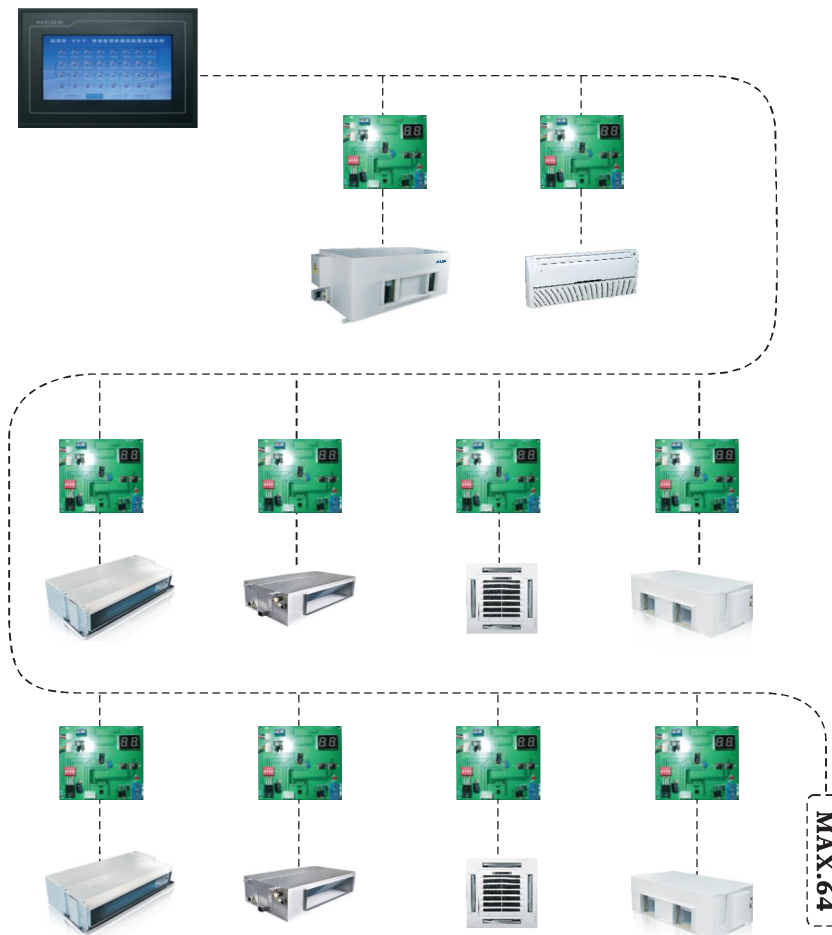


XK-04



Touch screen

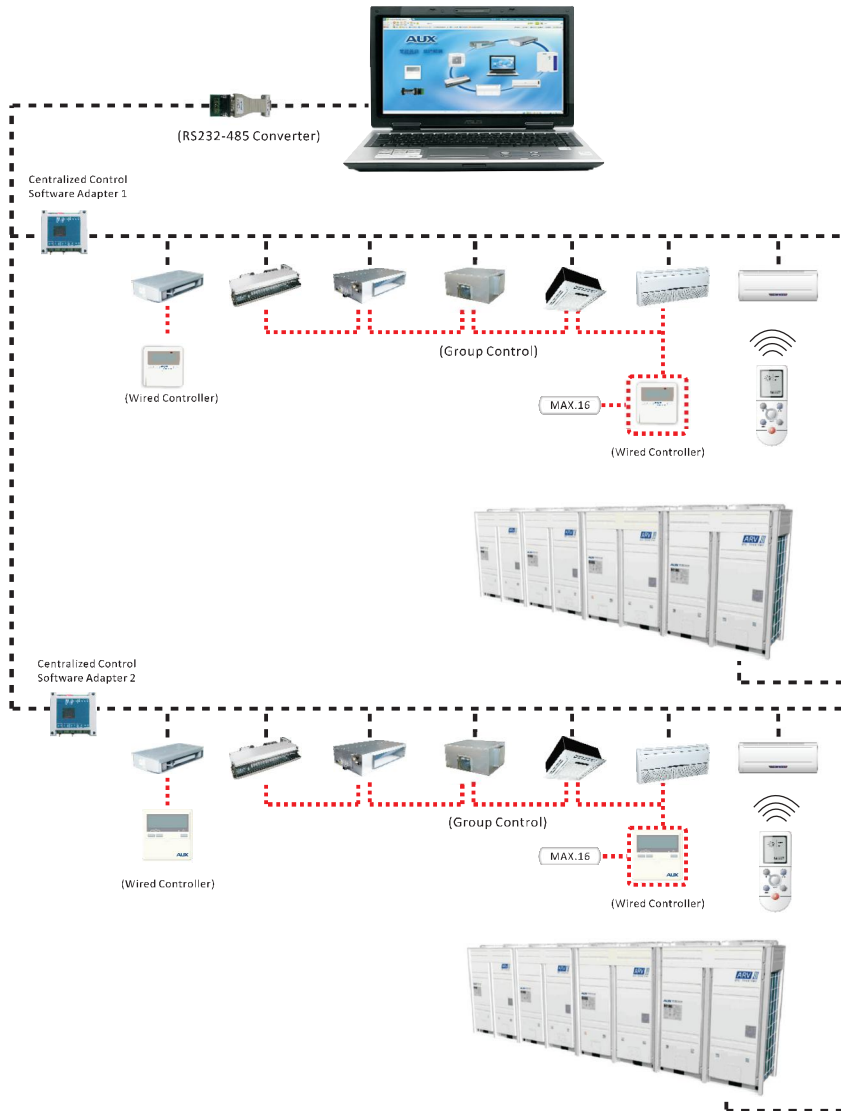
# Light Commercial Centralized Controller



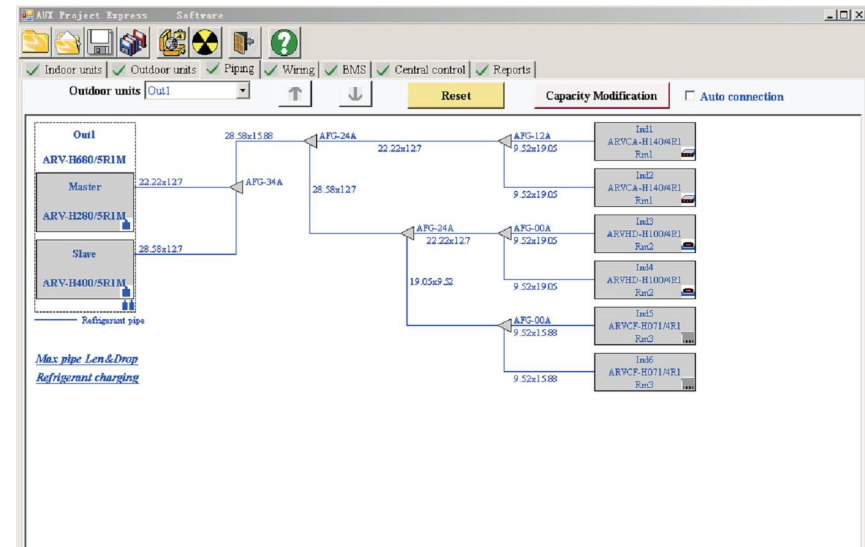
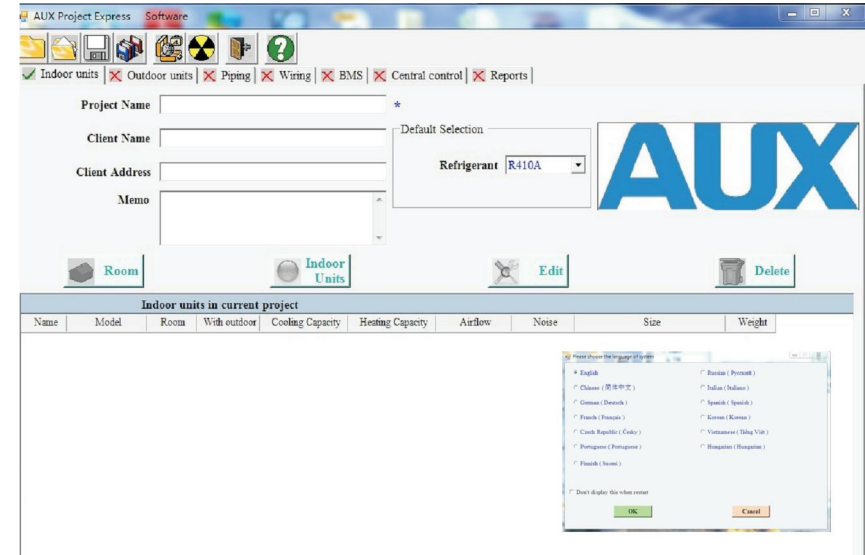
MAX.64

# Control System&Selection Software

## Control System of ARV



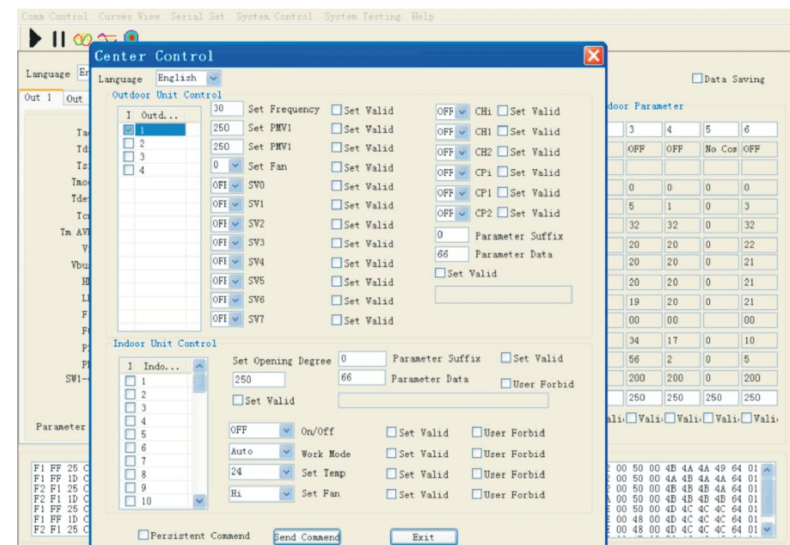
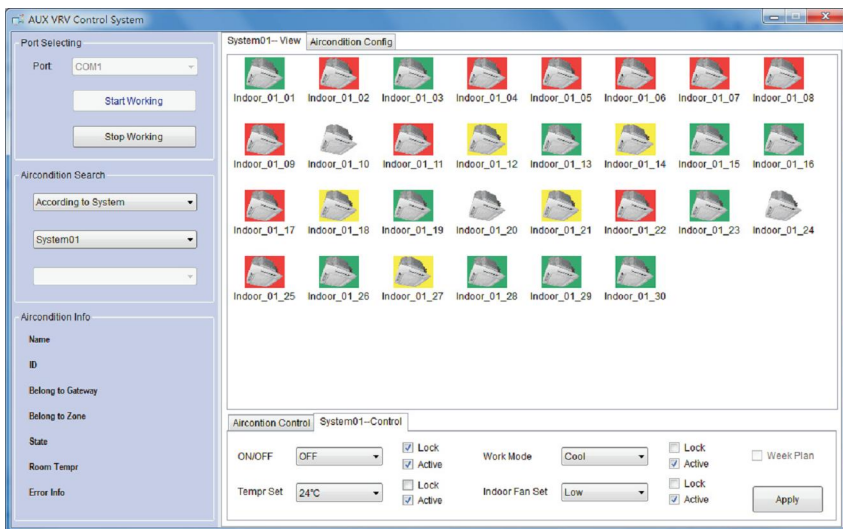
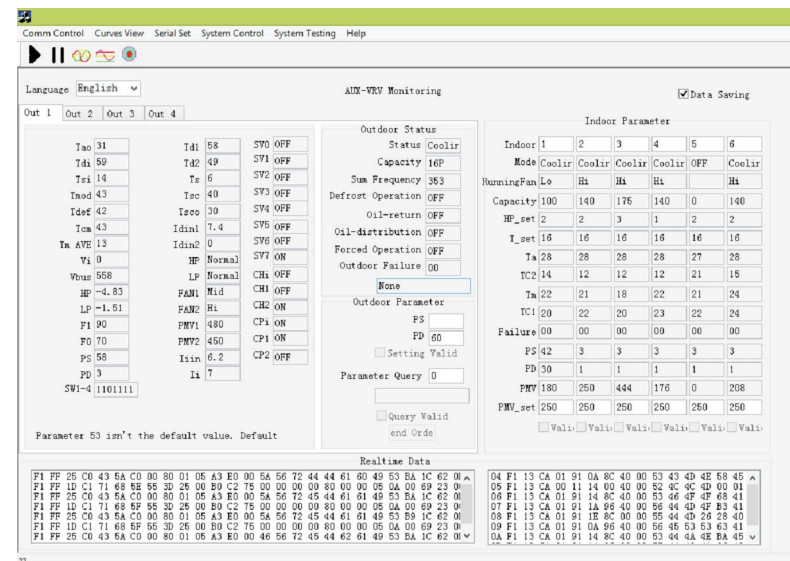
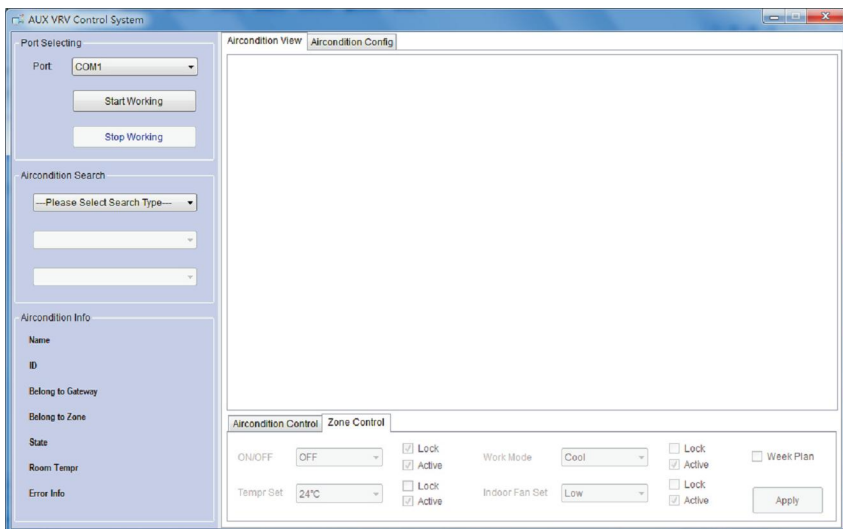
## Selection Software of ARV



# Control System & Selection Software

## Centralized Control Software of ARV

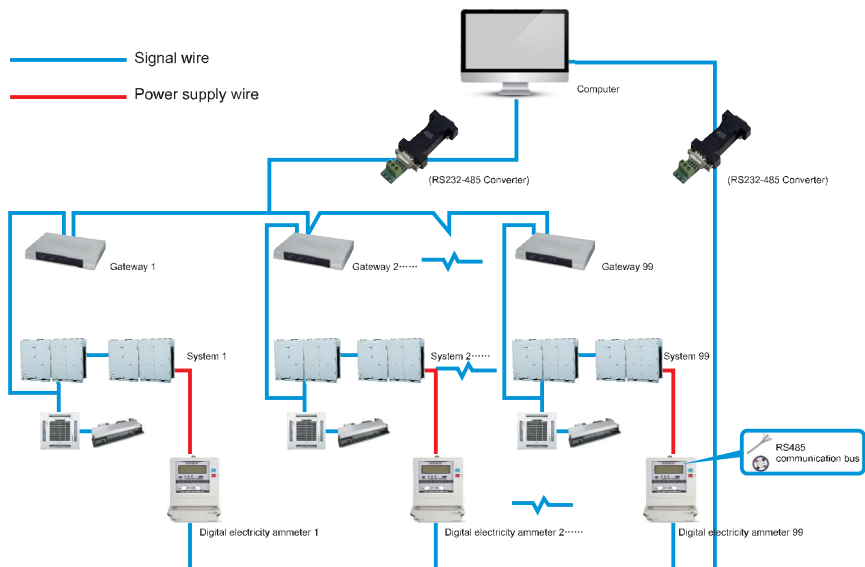
## Monitoring Software of ARV



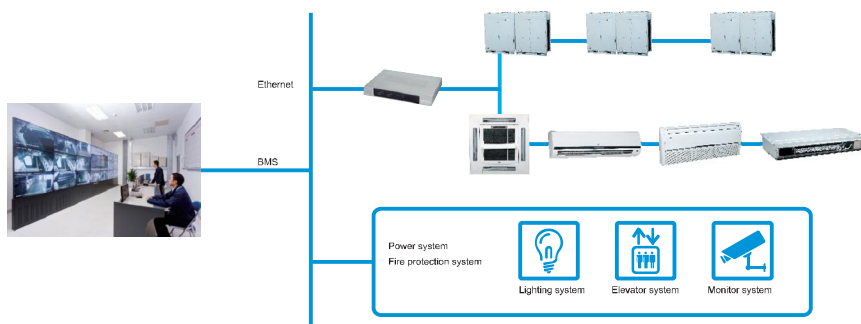


## Control System & Selection Software

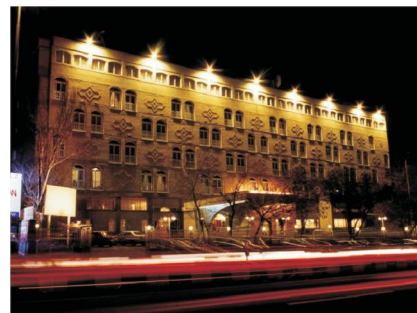
### Billing System



### BMS System



## Project Reference



### 1 Tabriz International Hotel

Project Name: Tabriz International Hotel  
 Location: Tabriz, Iran  
 Product: air cooled screw chiller & Fan coil

1



### 2 Baran Bldg

Project Name: Baran Bldg  
 Location: Qom, Iran  
 Product: split duct

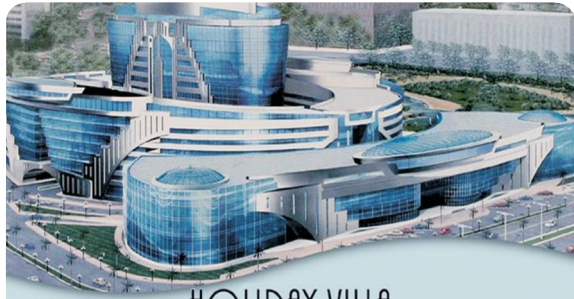
2



### 3 Niyesh Bldg design

Project Name: Niyesh Bldg  
 Location: Tehran, Iran  
 Product: air cooled screw chiller & Fan coil

3



**HOLIDAY VILLA**  
HOTEL & RESIDENCE,  
CITY CENTRE DOHA, QATAR  
OPENING MARCH 2008



**Al Fardous Residential Complex**

Location: Doha, Qatar (2006~2007)  
Cooling Requirement: 5000Tons  
Equipment: Air Cooled Screw Chiller  
LSSLGF-660D 8 pcs  
LSSLGF-840F 8 pcs  
LSSLGF-1800M 4 pcs  
Total compressor 56 pcs  
FCU&AHU 2244 pcs

4



**Milford Plaza Hotel**

Location: New York, U.S.  
Project Profile: Select AUX Water  
Source Heat Pump Units.

5



**Shagin resastashor restaurant**

Location: Russia  
Project Profile: Construction area is 4,100m<sup>2</sup>,  
select AUX Cassette and Duct Units.

6



**Palace Hotel**

Location: Mumbai, India (2007)  
Cooling Requirement: 29,000 m<sup>2</sup>, 5000 kW  
Equipment: Air Cooled Screw Chiller  
ACACSC-3450A5/T 5 pcs  
Fan Coil Units & Air handing units  
1000pcs

7







8

**Doha 230 Villas**

Location : Doha , Qatar (2008)  
Cooling Requirements: 11000 kW  
Equipment: Ducted Split Units 1100pcs



9

**Tablo Mall**

Location: Erbil, Iraq (2009)  
Cooling Requirement: 40,000 m<sup>2</sup>, 9200 kW  
Equipment: Air Cooled Screw Chiller  
ACACSC-H2326A5/D 11 pcs  
ACACSC-H1967A5/D 3 pcs  
Fan Coil Units 787 pcs  
Air Handling Unit 21pcs



**Comandante Gika**

Location: Luanda, Angola (2010)  
Cooling Requirement: 345,000m<sup>2</sup>  
Equipment: Garden Tower:

VRV Units 1,115 pcs  
Air Cooled Chillers 56 pcs  
Air Handling Units 16pcs  
Residence:  
VRV Units 1277pcs

10

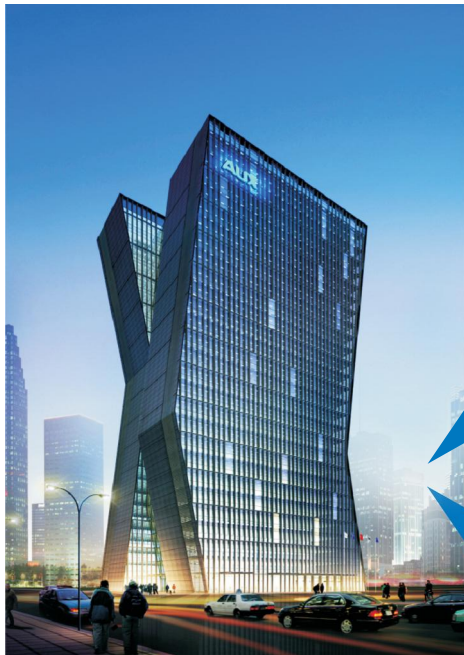


**Jakarta International Exhibition Centre**

Location: Jakarta, Indonesia (2008)  
Cooling Requirement: 3,500 kW  
Equipment: Air cooled screw chiller 187TR 5pcs  
+ Fan Coil & Air Handling Units 50pcs

11





**AUX Headquarter 12**

Location: Ningbo, China  
 Equipment : ARV II  
 Project Description: AUX headquarter projects occupies 66000 m<sup>2</sup>, the brand new X structure design makes it unique among the Yin zhou CBD buildings. The total cost of this ARV II project is 6 million RMB.



2010 World Expo  
**Saudi Arabia Pavilion**  
 Location: Shanghai, China  
 Equipment: AUX FCU&AHU

**13**



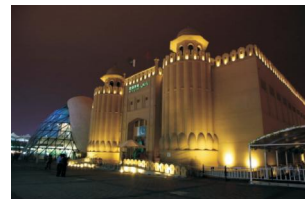
2010 World Expo  
**Ireland Pavilion**  
 Location: Shanghai, China  
 Equipment: AUX Light Commercial  
 4-way Cassette type Air Conditioner

**14**



2010 World Expo  
**Pakistan Pavilion**  
 Location: Shanghai, China  
 Equipment: AUX Light Commercial  
 4-way Cassette type Air Conditioner

**15**





### Ministry of Culture of the Peoples Republic of China

Location: Beijing China  
 Project Profile: Construction area is 21,000m<sup>2</sup>, select AUX Air-cooled Module Chiller Units.

# 16

### Zhuhai Government Office Building

Location: Zhuhai, Canton, China  
 Selected Products: Light Commercial  
 Project Description: this government office building occupies 6000 m<sup>2</sup> and was finished in July, 2006, it selects AUX light commercial Cassette type air conditioner.

# 17



# AUX

TECHNOLOGY LEADS INTELLIGENT LIFE